

## Find A Balanced Solution



South River EMC has joined with other Southeastern cooperatives to reach members of Congress who will be voting this year on new national energy policies. These policies to meet environmental goals could potentially increase rates by as much as 40 percent.

As we work with members of Congress, we ask that you have your opinion heard.

Let your elected officials know that cost matters. The more voices, the better.

Visit [www.findabalancedsolution.com](http://www.findabalancedsolution.com) to learn more about this important issue or to contact your congress person. You can also call your member of Congress by dialing 877-40BALANCE or 877-40-225-2623.

Give them a call, their decisions will affect your rates.

## New Charge Begins

This month there will be a new line item on your bill called the Renewable and Energy Efficiency Charge.



It is a monthly charge to recover the costs incurred during the year to comply with the Renewable Energy Portfolio Standard law or REPS.

The charge, also known as a rider, applies to all cooperative meters.

South River EMC's monthly Rider schedule for 2009 is 83¢ per residential meter; \$4.16 for commercial meters and \$41.66 per industrial meter.

The Rider will be adjusted annually to reflect the anticipated costs for compliance for that year.

We are offering energy efficiency programs to help you keep costs down and to help us achieve our REPS requirement. Our programs include: CFL Rebates, Agricultural Efficient Lighting, Solar Water Heating Rebates and Water Heater Efficiency Kits.

## Wanted: Travelers Tales

Members, we'd love to hear from you!

With summer on its way, send us stories of your trips to be published in *The Communicator*.

You may inspire another family's great adventure, or encourage them to be more careful in their pursuit of a great summer getaway.

Stories can be submitted electronically to [jwahl@sremc.com](mailto:jwahl@sremc.com), or by U.S. mail to:

South River EMC  
Attn: Julie Wahl  
PO Box 931  
Dunn, NC 28335



**South River EMC Offices  
Will Be Closed  
Monday, May 25,  
To Honor Memorial Day**



# Demand A Balanced Approach

by CEO and Executive Vice President Buddy G. Creed



There has been a lot of talk about energy lately. The subject is covered in newspapers, on cable news, talk radio and innumerable blogs. It's been the topic of many speeches in Washington, D.C. You also received a letter from your Cooperative in the mail discussing these issues.

I would like to thank all of you for your feedback. We have received so many responses, which we will share with our elected officials.

The resounding message in the correspondence is that people are stretched financially and do not want to see any unnecessary increases.

As a not-for-profit electric cooperative, we are naturally advocates of the mem-

bers we serve. You can trust that we work on your behalf every day—this is one of the many benefits of being

part of an electric cooperative. We do not work to increase profits—we have none. We do not work to pad investor pockets—we have none. We are owned by you. Our successes are your successes!

As prices in all sectors of the economy continue to rise, I wish I could say that these increases won't impact our rates, but that would be untrue. We do anticipate a slight increase this year, but we must first complete a cost of service study to thoroughly assess the cost of providing you with safe and reliable electric service.

It is important to note that any increases experienced this year will be the result of economic impact not the current legislative climate. The potential increases that may occur as an outcome of federal legislative activity could raise electric rates as much as 40 percent over the next 20 years. These increases will be above any increases in that same time resulting from fuel costs, inflation, etc.

We are taking every opportunity to increase efficiencies at the Cooperative from doing more with fewer employees to implementing technology that will help us to provide better service more

efficiently and economically.

I also want to make you aware of a new initiative introduced by the electric cooperatives from many southeastern states. Many cooperatives,

including ours, have launched a new information campaign called, Find A

Balanced Solution.

The purpose of this campaign is to raise awareness of the impact of a poorly-planned and executed energy policy.

Please take a minute to visit

[www.findabalancedsolution.com](http://www.findabalancedsolution.com) for a wealth of information on current energy policy discussions, potential ramifications and the need for a balanced solution. It is time for us all to have our voices heard. By visiting this site you are given several ways to contact your elected officials and let them know that you demand a balanced approach; one that is good for the environment and your household budget.

Additionally, we are providing ways for you to use energy wisely while reducing your electricity costs. On our Web site, [www.sremc.com](http://www.sremc.com), we offer the HomeEnergy Suite. This application provides you with an easy-to-use home energy audit tool, helps you to determine the energy savings that can be realized through changes made to your home, has a variety of energy calculators and offers an online energy library and a fun-filled educational experience called Kids Korner. I encourage you to visit our site and start saving now.

We are looking out for you.

**“As a not-for-profit electric cooperative, we are naturally advocates of the members we serve. You can trust that we work on your behalf everyday—this is one of the many benefits of being part of an electric cooperative.”**

# Teachers with Great Ideas Win Bright Ideas



**BRIGHT  
IDEAS**

Educators, share those great project ideas with us!

South River EMC is accepting Bright Ideas grant applications online until September 18. Visit [www.ncbrightideas.com](http://www.ncbrightideas.com) and complete an application.

The Bright Ideas program offers an incentive for teachers applying early! If you apply before midnight on August 17, you are eligible to win a \$500 Visa card. The drawing will be held August 24.

South River EMC will be funding \$50,000 in educational grants through Bright Ideas this year. You could be a lucky recipient!

Since 1994, North Carolina's Touchstone Energy Cooperatives have funded more than \$5.9 million in grants, which have touched the lives of over 1 million North Carolina students.

For more information, visit [ncbrightideas.com](http://ncbrightideas.com), or contact Catherine O'Dell or Julie Wahl at 910-892-8071.

## Keep May Days Sunny: Practice Electric Safety

May is National Electric Safety Month, so what better time to brush up on the basics of electric safety?

According to the U.S. Fire Administration, electric fires claim the lives of 485 people in the United States each year and injure more than 2,300, an additional 400 people die each year from electrocutions. These statistics show the importance of using extreme caution when dealing with electricity.

### Indoors:

- Use the correct light bulbs in all lamps and light fixtures. Look inside the light fixture to find the label that tells what wattage is right for the fixture. If using a compact fluorescent light (CFL), look at the package for wattage equivalents.
- Cover all electric outlets in your home with faceplates and do not overload outlets with multiple adaptors or power strips.
- Check electric cords regularly for frays, cracks or kinks and replace them if damaged.
- Use extension cords as a temporary solution, minimizing their use whenever possible.
- Do not tie or knot electric cords and never let furniture sit on cords.



- Unplug small appliances in your house when you are not using them.
- If your lights flicker or your power repeatedly goes out, call an electrician.

### Outdoors:

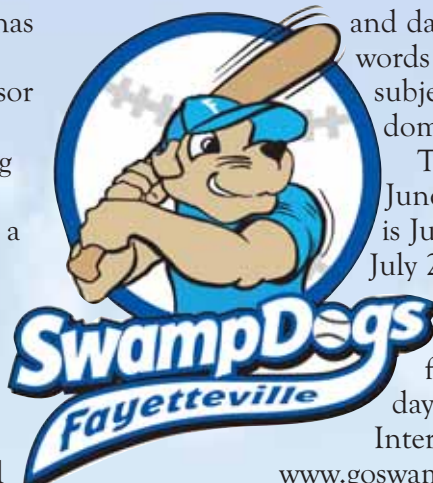
- Never dig in your yard without contacting the Call Before You Dig center by dialing 811. You could possibly strike a utility line that could electrocute you. Don't take chances. Call 811 before you dig.
- Never use electric equipment near pools or other wet areas.
- Be aware of overhead power lines when using a ladder or pole and always stay at least 10 feet away from any electric lines.
- Do not trim trees yourself that are near power lines. Have a professional come do this.
- Do not let children fly kites or climb trees near power lines.

Following simple electric safety precautions both indoors and out, can help keep you and your family safe and alive. In recognizing National Electric Safety Month, learn the basics of electric safety and teach your family how to stay safe near electricity.

# SwampDogs' Camp Scholarships Available

Hey Kids! South River EMC has teamed up once again with the Fayetteville SwampDogs to sponsor three camps for kids ages 5-12. South River EMC is also offering four scholarships per camp! The time has come to sign up to win a scholarship for one of three Fayetteville SwampDog Day Camps, which will be held June 25, July 15 and August 3 at JP Riddle Stadium in Fayetteville.

If you are interested in applying for a scholarship, please mail or e-mail (sremc@sremc.com) the following information to our office: student's name, address, age



and daytime phone number. Please place the words "camp scholarship" on the envelope or subject line. Four names will be drawn randomly for each camp.

The deadline for the June 25 camp is June 18. The deadline for the July 15 camp is July 8 and for the August 3 camp will be July 27. Scholarships only cover the cost of the camp. Parents or guardians are responsible for transportation to and from JP Riddle stadium on the camp day.

Interested in attending camp? Register at [www.goswampdogs.com](http://www.goswampdogs.com). Your child can attend one day of camp for \$40, two days for \$75 and all three days for just \$100.

# Power Source Volunteers Award Scholarships

This year, South River EMC's volunteer committee, the Power Source Volunteers, presented three scholarships to high school seniors.

Josh Godwin, son of Ruth and Joel Godwin of Wade, will receive a \$1,000 scholarship to assist with his expenses at the University of North Carolina at



Stacey Dudley

Chapel Hill, where he plans to attend and pursue a degree in pre-dentistry. He is currently a senior at Cape Fear High School in Fayetteville.

Stacey Dudley, daughter of Brenda and Tom Dudley of Salemburg, will be receiving a

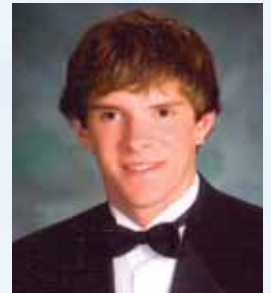
\$500 scholarship to assist with her expenses at UNC-Chapel Hill, where she plans to receive a degree in accounting. Stacey is a senior at Lakewood High.

Carla Brooke Parker, daughter of Carvis Parker and Brookie Ellis of Benson, will also receive a \$500 scholarship to attend Campbell University and obtain a degree in accounting and finance. She is a senior at South Johnston High School.

Factors considered in granting scholarships include: character, moral standards, citizenship, past and present academic performance, letters of recommendation, statements of career goals and qualifications; extra-curricular activities; and a personal interview with a three member interview panel.

The Power Source Volunteers are a volunteer committee com-

prised of members of South River EMC. The committee is dedicated to serving the Cooperative through community activities and goodwill. Funds for the scholarships are raised primarily through the annual Oyster Roast and Shrimparoo held in March in cooperation with the United Way of Harnett County.



Josh Godwin

Carla Brooke Parker



# Operation Round Up in Your Community

March recipients included:

- SAFE of Harnett County
- UCare, Inc.
- Child Advocacy Center, Inc.
- Salvation Army of Cumberland County
- Harnett County Coharie Indian Association
- Gray's Creek Middle
- Mac Williams Middle
- Gallberry Farms Elementary
- Manchester Elementary
- Cape Fear Christian Academy

## Grants Now Available

South River EMC is once again accepting Operation Round Up applications. Applications are due to the office by May 29. Decisions on applications will be made in early June.

Applications are available in both South River EMC offices and online.

For more information call our office at 910-892-8071 or visit [www.sremc.com/roundup.aspx](http://www.sremc.com/roundup.aspx).



## Energy Efficient Lights

Mercury is an essential component of many energy-efficient light bulbs. The two most common types of energy-efficient lighting that contain mercury are fluorescent bulbs, including compact fluorescent light bulbs (CFLs) and high intensity discharge (HID) bulbs.

Fluorescent bulbs provide lighting to most schools, hospitals, office buildings and stores. HID bulbs include mercury vapor bulbs, metal halide and high-pressure sodium bulbs, and are used for streetlights, floodlights, parking lots, and industrial lighting.

Other mercury-containing bulbs include neon/argon lamps commonly used in the electric sign industry.

Although lighting manufacturers have greatly reduced the amount of mercury used in lighting over the past 20 years, they are not yet able to completely eliminate the need for mercury. While mercury-containing bulbs have small amounts of mercury (about 1/100th of the amount of mercury found in a mercury fever thermometer), they are one of numerous sources that collectively impact the environment during disposal.

Nationwide, more than 670 million mercury-containing bulbs are discarded each year. Most bulbs are still discarded with municipal solid waste

that is landfilled or incinerated. These bulbs should be recycled after they burn out. Virtually all components can be recycled. The metal end caps, glass tubing, mercury and phosphor powder can all be separated and reused. Recyclers often sell the metallic portions as scrap metal. The recycled glass can be remanufactured into other glass products. Mercury can be recycled into new fluorescent light bulbs and other mercury-containing devices.

Fluorescent bulbs discarded in the trash will break and some mercury will be released into the environment. However, the use of mercury-containing bulbs for general indoor lighting makes good environmental sense. These bulbs are

## Bring Us Your Used CFLs

If your CFL has reached the end of its lifetime you have two options for disposal—trash or recycling.

For trash disposal, call your waste management company and verify that they do not incinerate their trash. If they do, you will need to ask them about other options for recycling.

If they do not incinerate, place your old CFL in a sealable plastic bag, or one that can be tied off. It can then be placed safely in the trash.

The other option is recycling, which you can do through South River EMC. The Cooperative has buckets placed in the entrance of our offices in which you can place your old bulbs. We'll handle the rest!

Continued on Page G



# Burch Farms Keeps Growing and Growing

Next time you sit down to a meal of fresh warm vegetables from your grocery store remember they may have been grown by a neighbor- Burch Farms.

It all started in the 1950s when the Burch family moved to Faison and started planting on about 30 acres of land.



*Sweet potatoes are laid out in a trench.*

have much land.”

Today the farm is about 4,000 acres, has 150 full-time employees, and is run by the remaining Burch sons, Jimmy, Ted and Bill.

The farm has a lot going for it. Burch Farm ships all along the East Coast and has contracts with Food Lion, Aldi and Harris Teeter.

They are safe food providers. Their facilities are certified by the U.S. Department of Agriculture, and they undergo audits annually. They regularly achieve high sanitation, documentation and food security scores.

Burch Farms is constantly busy growing 2 million bushels of every product annually.

“We stay busy,” said Jimmy Burch, part-owner of Burch Farms. “Our busiest time of year is March through December.”

A few of the items they grow include cabbage, bell peppers and beets. Another great fact is that they grow the three most nutritional vegetables. Which are sweet potatoes, greens (this includes collards, mustard and kale), and spinach, of which

they grow a small amount.

The Burchs also have 500 acres of certified organic vegetables which are used for baby food. The farm is a grower for Earth’s Best, Beechnut and Gerber baby food companies.

They have year-round availability, especially when it comes to their sweet potatoes. The farm has state-of-the-art controlled atmosphere storage and is able to ship daily. They store about 1.2 million bushels of sweet potatoes between three warehouses.

As for the future, Burch Farms will keep on growing, slowly but surely. Business has increased with the current economic situation.

“People would rather pay a dollar for a head of cabbage than go out,” said Burch. “It’s cheaper for them to eat at home.”



*Fresh cabbage is wrapped in plastic and sent to grocery stores.*



*Sweet potatoes are covered with dirt and plastic to act as a mini greenhouse.*



# South River EMC Helps Cut Water Heating Costs

South River EMC members have warmed up to the water heater efficiency kit program since its introduction in November.

"I purchased a water heater efficiency kit to see how much it could save," said Judith Blackmon of Benson. "My water heater is located in the garage and it can get very cold out there."

Although Blackmon is unsure of how much she has saved, she knows she has and is so satisfied that she has recommended the kit to her friends.



South River EMC Energy Specialist Robby Talton fits pipe insulation.

The kit includes a water heater blanket, pipe insulation (seen at left), a water-efficient showerhead, a kitchen sink aerator and two faucet aerators, all for just \$12.

If you like, you can self install, but for \$10, a Cooperative employee will install the pieces for you. It takes installers about an hour.

"I love it, how could you go wrong?" said Katherine Johnson. "I had people at work asking if I could buy them one."

These kits, installed at \$22 are going fast.

"I am very pleased with the faucet and showerhead," said Sophia Creeger, a member from Clinton. "The man that installed my kit was very nice and very professional, he explained everything he was doing and got me up-to-date."

Creeger purchased a kit to help save on energy costs because her water heater is at the opposite end of the house from her bathroom and she wanted the water to retain heat.

"The value is there," said Joseph Barone. "In Connecticut, this would cost you about \$200."

However, South River EMC offers you the kit with installation for \$22, plus tax.

If you are interested in purchasing a water heater efficiency kit call our office at 910-892-8071.

## LIGHTS Continued From Page E

significantly more energy-efficient than incandescent bulbs because they require less energy to provide lighting.

Electrical generation from coal-burning power plants also releases mercury into the environment. The use of fluorescent bulbs in place of incandescent bulbs lowers energy use, thus reducing the associated release of mercury from many power plants. Fluorescent bulbs are also more cost effective because they last up to 10 times longer than incandescent bulbs. EPA strongly encourages the recycling of all mercury-containing bulbs after they burn out.

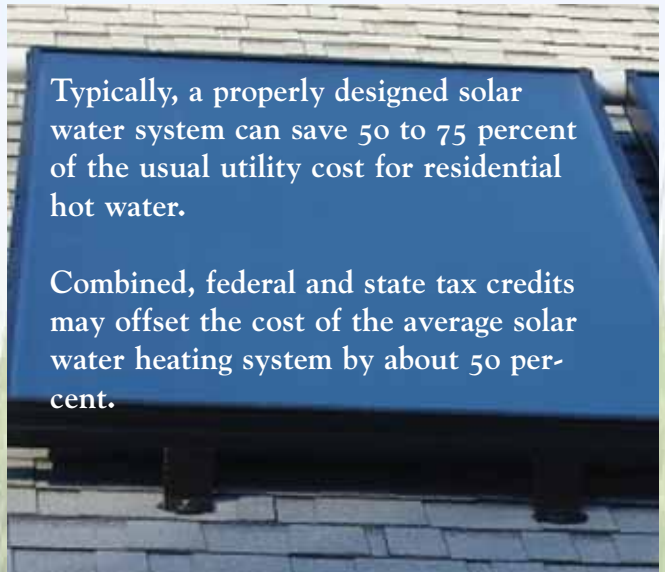
Don't forget South River EMC's CFL rebate program. For every CFL bulb you purchase you receive \$1 back!

Information from [www.epa.gov](http://www.epa.gov).

## Solar Water Heating Facts:

Typically, a properly designed solar water system can save 50 to 75 percent of the usual utility cost for residential hot water.

Combined, federal and state tax credits may offset the cost of the average solar water heating system by about 50 percent.



## Farmers Experience Brighter Lights For Less

In these tough economic times, farmers are looking for ways to streamline costs. South River EMC's Agricultural Efficient Lighting program has them looking toward the light.

"I had started to change to CFLs as my incandescent bulbs blew out," said Andrew Herring, owner of a diversified row crop and poultry grow out operation. "I had friends that really liked them, and once South River EMC offered the rebate, I jumped all over that."

Herring lights his turkey houses for between six to eight hours a day, from dusk until midnight. The transition to CFLs, which took about two to three hours to complete, has been positive.

"There is an awful lot more light," he said, holding up a 23-watt, Greenlite CFL. "These have a lot cleaner light and I think they'll cut through the dust that gets on the lamp glass."

Hog house owner Jeffery Herring also replaced his incandescent bulbs with CFLs.

"The lamps take about a minute to get to max brightness," said Jeffery. "But they get a lot brighter (than incandescent bulbs)."

Herring chose CFLs because his incandescent bulbs were regularly going out and he had heard a lot about the lighting from CFLs.

"I saw the ad and decided it was an excellent time to try them out and see how much brighter it was," he said.

Herring needs bright lighting in his houses because his lights are only on at night when the hogs are being loaded out.

Ricky Johnson replaced incandescent bulbs in his chicken houses with cold cathode bulbs.

Cold cathode bulbs have no heating filament in them, thus making them more energy efficient. The



*Jeffery Herring with the new bright lights in his hog houses.*

sturdy glass cover also makes them better suited for rough environments.

"We read about the rebate in Carolina Country," said Johnson. "Called the office to ask about it and they told us it would save money to switch lighting."

Johnson's operation involves seven days of full power lighting. Then, lighting is dimmed down in the weeks that follow.

"They're not quite as bright," said Johnson. "But we chose them because we were told they would save more money."

Also, chicken eating habits depend on the lighting in their facilities.

If you're interested in learning more about South River EMC's Agricultural Efficient Lighting rebate visit [www.sremc.com](http://www.sremc.com) or call South River EMC at 910-892-8071.

The 25 percent rebate is open to members wishing to fully replace the incandescent bulbs in their hog, turkey and chicken houses with cold cathodes or CFLs.

Rebate is based solely on the cost of materials.



*Andrew Herring with one of his Greenlite CFLs.*

